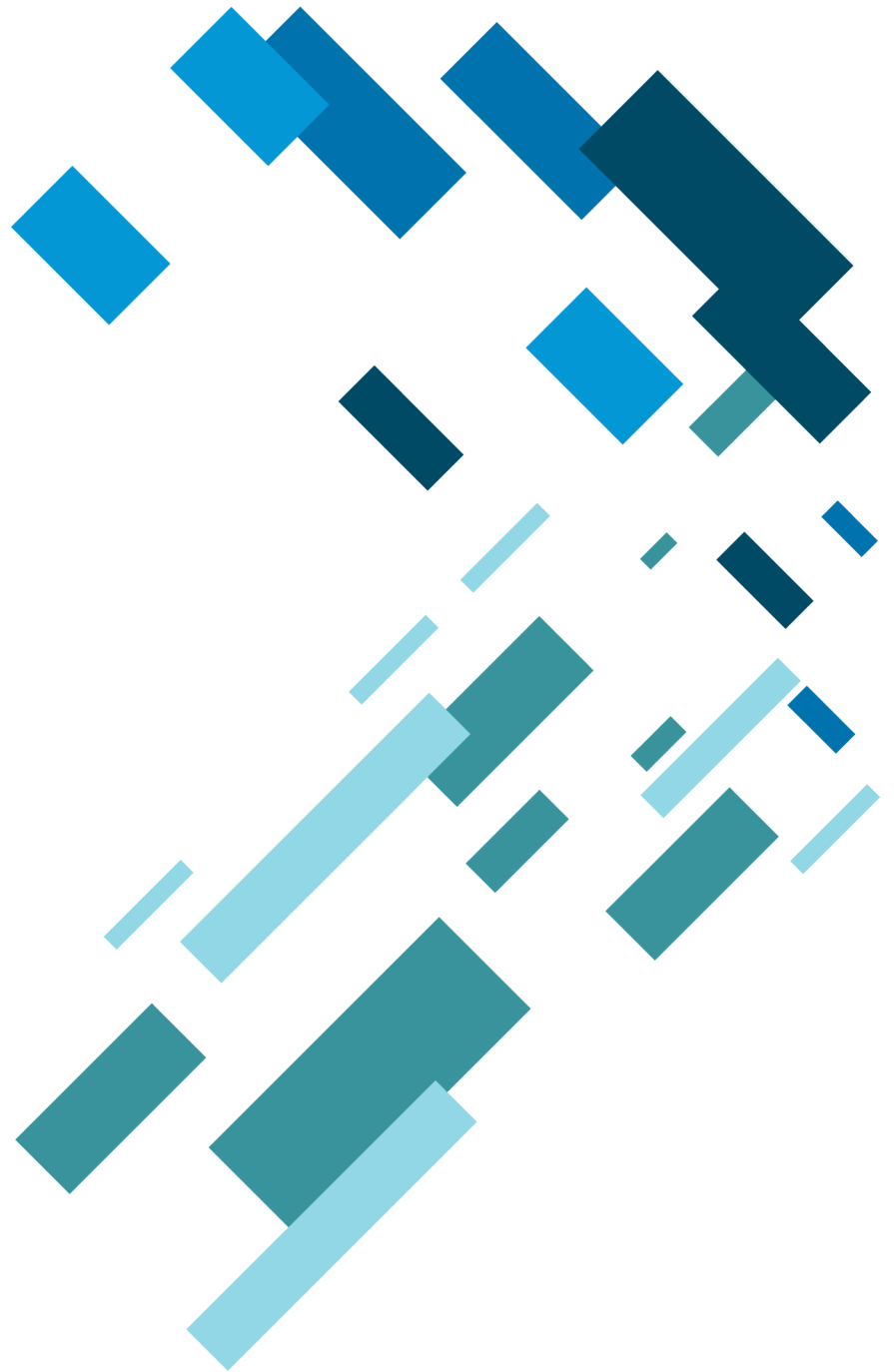




**TRADING
TECHNOLOGIES**

X_TRADER API WHAT'S NEW?



VERSION 7.17.0
DOCUMENT VERSION 7.17.0.DV1 3/5/14

LEGAL

This document and all related computer programs, example programs, and all TT source code are the exclusive property of Trading Technologies International, Inc. ("TT"), and are protected by licensing agreements, copyright law and international treaties. Unauthorized possession, reproduction, duplication, or dissemination of this document, or any portion of it, is illegal and may result in severe civil and criminal penalties.

Unauthorized reproduction of any TT software or proprietary information may result in severe civil and criminal penalties, and will be prosecuted to the maximum extent possible under the law.

Information in this document is subject to change without notice. Companies, names, and data used in examples herein are fictitious unless otherwise noted. No part of this document may be reproduced or transmitted in any form or by any means, electronic or mechanical, for any purpose, without the express written permission of TT.

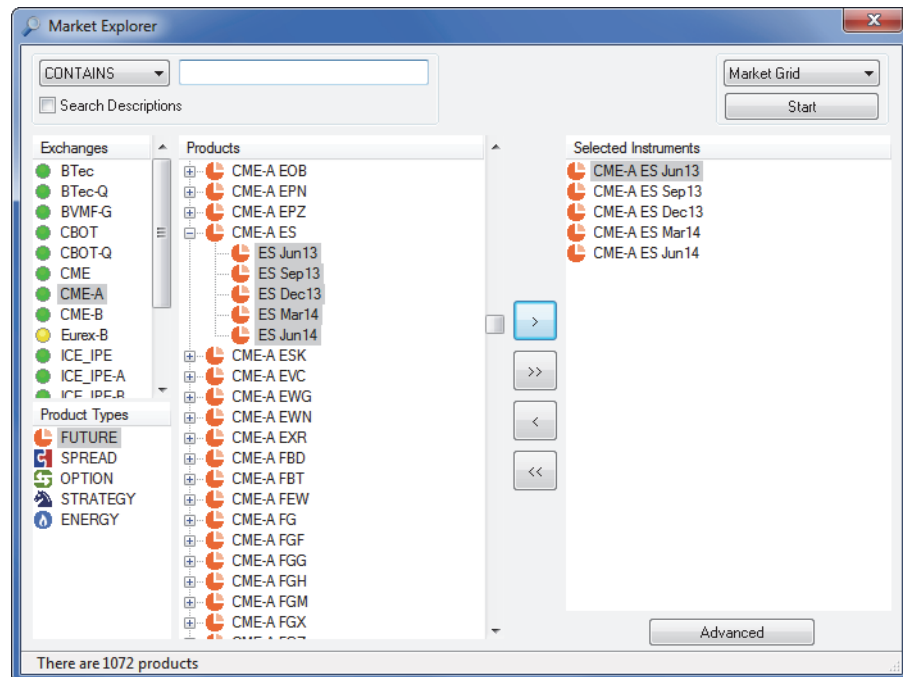
All trademarks displayed in this document are subject to the trademark rights of TT, or are used under agreement by TT. These trademarks include, but are not limited to, service brand names, slogans and logos and emblems including but not limited to: Trading Technologies®, the Trading Technologies Logo, TT™, X_TRADER®, X_RISK®, MD Trader®, Autospreader®, X_STUDY®, TT_TRADER®, TT CVD®, ADL®, Autotrader™, TT Trainer™, Back Office Bridge™, TTNET™. All other referenced companies, individuals and trademarks retain their rights. All trademarks are the property of their respective owners. The unauthorized use of any trademark displayed in this document is strictly prohibited.

Copyright © 2013-2014 Trading Technologies International, Inc.
All rights reserved.



What's New in X_TRADER API 7.17.X?

Overview	This document highlights new and updated functionality introduced in this version of X_TRADER® API.
X_TRADER Support	This version of X_TRADER API no longer supports versions of X_TRADER® prior to 7.9.2.
Multi-Connection Configurations	<p>X_TRADER API 7.17 added support for multi-connection configurations. Unlike a single connection configuration where a user is set up with a single set of credentials for each TT Gateway, a multi-connection configuration is one in which a user is set up with two or more sets of credentials for at least one TT Gateway. If you use a multi-connection environment, such as TT Multibroker in TTNET, you must modify existing X_TRADER API applications.</p> <p>For more information, see the <i>Using X_TRADER API in Multi-Connection Configurations</i> guide.</p>
Drag-and-Drop Limitations	<p>Contracts in X_TRADER API 7.12 and prior are gateway-based. In other words, contracts are associated with a specific gateway and orders for a contract can only be routed through the associated gateway. When dragging an instrument from an X_TRADER window, as shown below, the instrument contains the gateway information.</p>

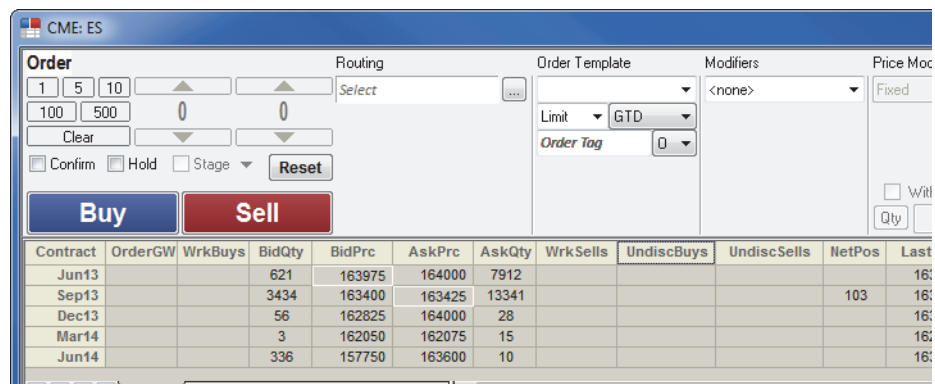
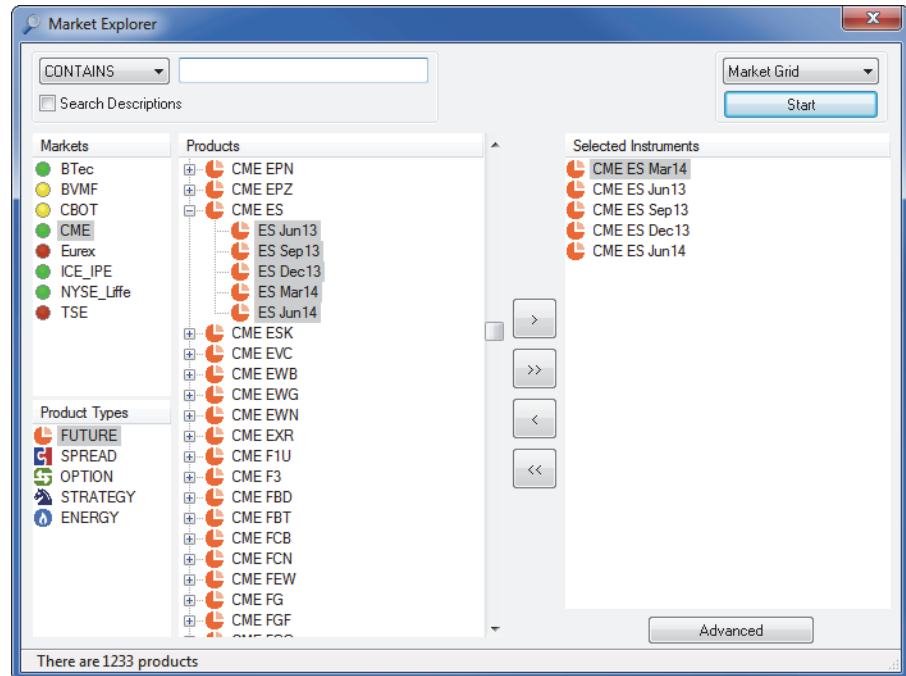


When you drag a contract from X_TRADER® 7.12 to an X_TRADER® API application, you are choosing a contract as well as the gateway through which orders will be routed. Attempts to send orders to a gateway different than the one associated with the contract will fail.

Contracts in X_TRADER® 7.17 and beyond are market-based. In other words, contracts and the gateways through which orders for contracts can be routed are

separate. As such, orders for a given contract can be routed through any gateway for the market associated with the contract.

In a market-based environment, assume you drag an instrument from either the **Market Explorer** or **Market Grid** window where the order-routing gateway is not specified, as shown.

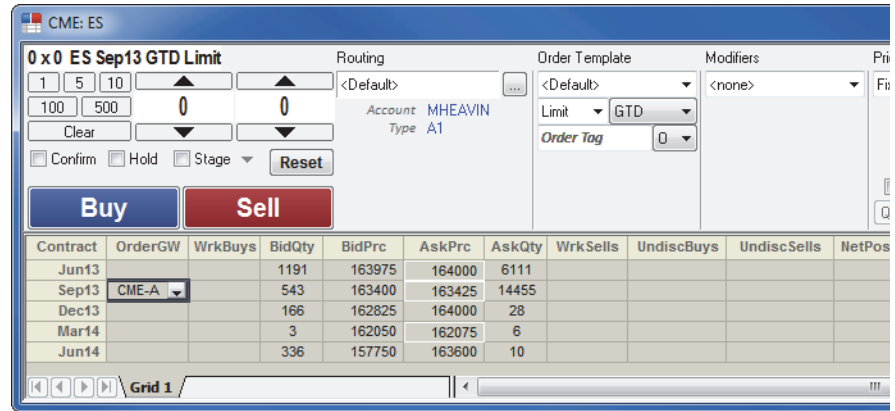


If you are configured for one flavor of a gateway for the market associated with the instrument, you can use the instrument to:

- Subscribe for prices (because market data is not gateway-based)
- Route orders (because only one possible destination is available)

If you are configured for more than one flavor of a gateway for the market associated with the instrument, you can only use the instrument to subscribe for prices. If you want to route orders for this instrument in this scenario, you can either:

- Drag the instrument with a specified order gateway (**OrderGW** column) from the **Market Grid**



- Change your code to specify the gateway in the new `ConnectionName` property, described in the *X_TRADER API Class Reference*.

Start-of-Day (SODs) and Manual Fills Deprecated

This version of X_TRADER API removes the following classes that support SOD and manual fills:

- `TManualFill`
- `TTRiskManager`
- `TTSODObj`
- `TTSODSet`

If you need this functionality, you must use X_RISK®.